

FILTER		Map	Browse
Fossil fuels	2019	Zonguldak Eren Termik Santrali 1 – 2	
Fossil fuels	2019	Zonguldak Eren Termik Santrali 3	
Fossil fuels	2019	Yunus Emre Kömürlü Termik Santrali	
Fossil fuels	2019	Yeşilovacık Kömürlü Termik Santrali	
Fossil fuels	2019	Yeniçatalağzı Eren Kömürlü Termik Santrali	
Fossil fuels	2019	Yenice Çırpılar Kömürlü Termik Santrali	
Fossil fuels	2019	Uluköy Kömürlü Termik Santrali	
Fossil fuels	2019	Konya Karapınar Kömürlü Termik Santrali	
Ores and building materials extraction	2019	Konaklı Taş Ocağı	
Biodiversity	2019	Kocaçay Deltası	
Fossil fuels	2019	Kireçlik Kömürlü Termik Santrali	
Fossil fuels	2019	Kirazlıdere Kömürlü Termik Santrali	
Ores and building materials extraction	2019	Kışladağ Altın Madeni	
Fossil fuels	2019	Kemerköy Kömürlü Termik Santrali	
Biomass and Land	2019	Kaz Dağları Zeytin Ağaçları Katliamı	
Fossil fuels	2019	Karapınar Konya Şeker Kömürlü Termik Santrali	
Infrastructure and Build	2019	Karadeniz Sahil Yolu Projesi	
Fossil fuels	2019	...	

STATUS

Archived

ASPECTS

economy, ecology, space

TEAM

Erdem Şentürk

YEAR

2019-20

ABSTRACT

In Eastern Turkey, currently and over the course of the 20th century, more and more mining and the extraction of minerals have had dramatic effects on land usage, ownership and traditional livelihood in the region. Few corporations monopolise land and natural resources, farmers are displaced, local networks of family, social and economic traditions and practices suffer irritation and erosion. Chemicals used in the process of big-scale mining form a threat to agriculture and healthy fresh water supply. Local networks organise resistance and practices to face the problems related to industrial mining, yet most of their activities are relatively connected to specific locations and not being transferred to the affected region.

LINKS

- Projekt Website (<https://map.birtakimseyler.com/>)

- Cevre Atlasi (<https://cevreatlasi.org/>)
- Website Screencast (<https://vimeo.com/511707096>)
- Git Hub Repository of the project (<https://github.com/Birtakimseylerecomap>)

FILES

Year	Project Name
2016	Kızıldag Altın Madenleri
2016	Konya Karapınar Kömürlü Termik Santrali
2016	Kölnarlı Taş Ocağı
2016	Kocacay Delisi
2016	Kireçlik Kömürlü Termik Santrali
2016	Kırsakdere Kömürlü Termik Santrali
2016	Kızıldağ Altın Madeni
2016	Kamenköy Kömürlü Termik Santrali
2016	Kaz Dağları Zeytin Ağaçları Korunması
2016	Karapınar Konya Şeker Kömürlü Termik Santrali
2016	Karaman Sahil Yolu Projesi
2016	Karaburun RES
2016	Karayıyıt Demir Madeni Ocağı
2016	Kızıldağ Altın Madeni
2016	İzmit İsmetpaşa Stadyumunun Yakılıp Yürüne AVM ve Rezidans Yapılması
2016	İzmit Expo 2020
2016	Merin Enerji

Year	Project Name
2016	Zonguldak Ereğli Termik Santrali 1 - 2
2016	Zonguldak Ereğli Termik Santrali 3
2016	Yunus Emre Kömürlü Termik Santrali
2016	Yedigöller Kömürlü Termik Santrali
2016	Yericağalan Ereğli Kömürlü Termik Santrali
2016	Yeniçağ Ereğli Kömürlü Termik Santrali
2016	Uşak Kömürlü Termik Santrali
2016	Teşlik Kömürlü Termik Santrali
2016	Şevketiye Lapseki Kömürlü Termik Santrali
2016	Şarkışla Kömürlü Termik Santrali
2016	Şarkışla Kömürlü Termik Santrali
2016	Selma Kömürlü Termik Santrali
2016	Sarıköy Kömürlü Termik Santrali
2016	Sarıköy Kömürlü Termik Santrali
2016	Selma Kömürlü Termik Santrali
2016	Sarıköy Kömürlü Termik Santrali
2016	Sarıköy Kömürlü Termik Santrali
2016	Sarıköy Kömürlü Termik Santrali

Finike marble and stone quarries

Finike marble and stone quarries

2016 - One and building materials extraction

2 January 2016 - **YÖKAR**

A major case on 10th May 2017 made headlines in Turkey. It took place in a village of the Mediterranean city of Antalya, Akyıl and Ali Büyüknurgali, a couple, were cruelly shot dead in their countryside house. They were highly involved in justice, and very well-known for their environmental and consumer rights activism. Büyüknurgali was best known for his activism and lawsuits against stone quarries in Finike and the rest of Antalya, in addition to being the chairman of a lawyers' rights association and a consumer rights workshop within the Antalya City Council. With the help of locals and environmentalists, the Büyüknurgali had been fighting against local stone quarries in Finike's Akarsul, Dalaydere, Kılınk and Akdağ villages, which are located among centuries-old cedar and pine forests. In return, the couple experienced constant harassment or lead to their activism, according to their friends' accounts (1). For the past 8 years, they were leading both a civil campaign and a lawsuit against destructive stone and marble quarries in Finike, a small agricultural district. The adverse environmental effects of open-pit mining and particularly of those in Antalya to the agricultural fields led the husband and then, over the course of the campaign, the couple managed to shut down the operations of a marble quarry owned by a company called "Barın Maden".

Case Studies About

ACTORS

Finike

Can

- Çengiz İnşaat Company - Turkey
- TEMA Non-government - Turkey
- Karadeniz İspanyolcuları Non-government - Turkey

IMPACTS

Visible

Potential

- Deforestation and loss of vegetation cover - Environmental
- Loss of landscape / aesthetic degradation - Environmental
- Other environmental impacts - Environmental
- Accidents - Health
- Loss of traditional knowledge/practices - Agriculture - Local
- Land dispossession - Social
- Loss of landscape / aesthetic degradation - Environmental
- Groundwater pollution or depletion - Environmental

COMMODITY

Gold

Kızıldağ Gold Mine

Kızıldağ Gold Mine is the largest gold-mining operation in Turkey. A total of 10 million tons per year is expected to be extracted with an expected 18 years of mine life. The mine will produce 240 COC ounces of gold per year at full production capacity. Kızıldağ is located within the boundaries of the province of Zonguldak, some 190 kilometers to the west and Ankara 180 km north-west. The city center is the closest to the project site, being at 35 km north-west. The projects started in 1988 on both local and national level. However, despite the protest by E.Ü.Ö, the mine succeed to pass a license in 2002, and in 2008 the mine began to be operational.

Source: Biletas

ACTORS

IMPACTS

Visible

Potential

- Deforestation and loss of vegetation cover - Environmental
- Loss of landscape / aesthetic degradation - Environmental
- Land dispossession - Social
- Loss of landscape / aesthetic degradation - Environmental
- Accidents - Health
- Groundwater pollution or depletion - Environmental
- Land dispossession - Social
- Loss of landscape / aesthetic degradation - Environmental

Case Studies About

ACTORS

Finike

Can

- Çengiz İnşaat Company - Turkey
- TEMA Non-government - Turkey
- Karadeniz İspanyolcuları Non-government - Turkey

IMPACTS

Visible

Potential

- Deforestation and loss of vegetation cover - Environmental
- Loss of landscape / aesthetic degradation - Environmental
- Other environmental impacts - Environmental
- Accidents - Health
- Loss of traditional knowledge/practices - Agriculture - Local
- Land dispossession - Social
- Loss of landscape / aesthetic degradation - Environmental
- Groundwater pollution or depletion - Environmental

COMMODITY

Gold

Cost of Gold

Gold is an element that has profoundly influenced the physical and sociological structure of the world through history due to its distinct value, although there is no benefit that should be contained. Today most of the gold is used as jewelry or rather not used. Most of the extracted gold is stored in boxes as bars. It is constantly changing in shape and in its constant physical or virtual circulation. Perhaps your gold watch includes a Roman coin that was in circulation 2,000 years ago. This is a financial asset that can be visualized by doing some transactions on the stock exchange.

IMPACTS

Visible

Potential

- Deforestation and loss of vegetation cover - Environmental
- Loss of landscape / aesthetic degradation - Environmental
- Land dispossession - Social
- Loss of landscape / aesthetic degradation - Environmental
- Accidents - Health
- Groundwater pollution or depletion - Environmental
- Land dispossession - Social
- Loss of landscape / aesthetic degradation - Environmental

Case Studies About

Data Platforms for the Environmental Activism

Mapping the Environmental Conflicts and Relational Visualisation of the Responsible Actions, Impacts and Commodities

The Project

Blue Marble is a web-based participatory map platform that documents, archives and visualises conflicts on environmental issues and helps citizens of affected communities or regions.

Clams, mining, incineration plants, deforestation, fracking, water pollution caused by industry etc. have serious ecological and social impacts, against which affected communities worldwide try to protect themselves. However, projects with an extensive intervention in the ecosystem often remain hidden, the effects are not made public, or only partially, or the relationships to projects are concealed.

This platform should first create transparency, inform, make connections visible, connect environmental movements working on related topics and finally tell stories and thus be heard.

The platform aims to be open to creative approaches for visualising certain aspects beyond known journalistic means such as text and images and last but not least to make stories come alive.

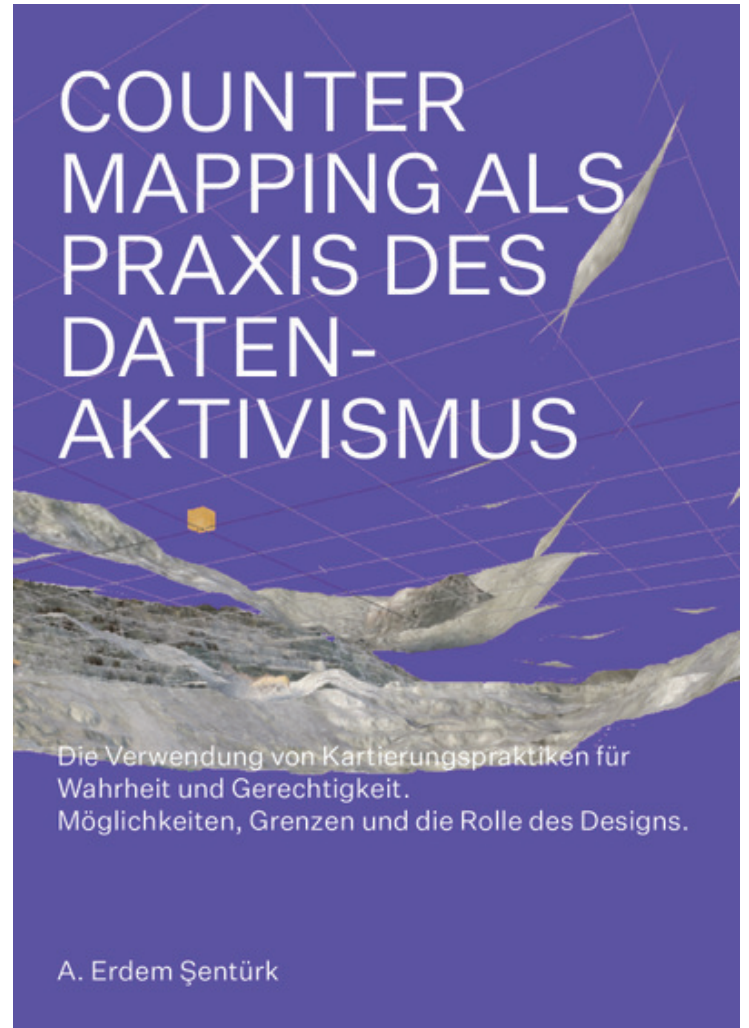
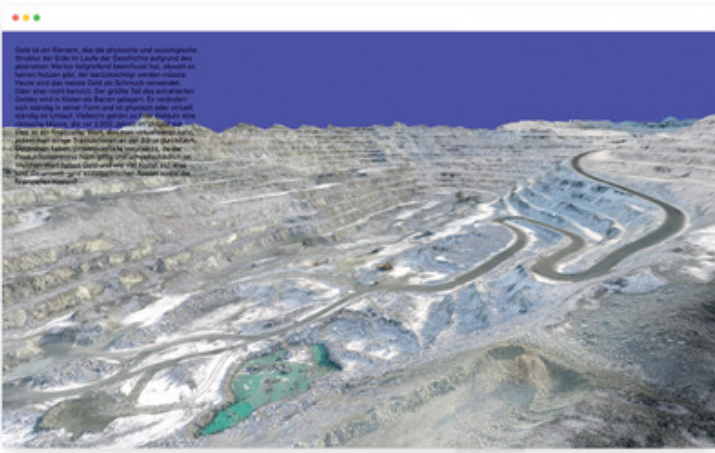
Our main principles the data solidarity platform is based on are: Transparency, Collaboration, Participation, Verification, Open source, Accessibility, Independence.

For developers

<https://github.com/Birtakimseylerecomap>

Technical overview

The platform is a digital application with a technical infrastructure that allows data from participants to be stored and analyzed. The technical requirements of the platform are provided by open source software technologies. It is important for transparency that all platform codes are published as open source. It also makes it possible for the application to be developed by everyone. It pro-



All rights reserved. If you want to know more about this project or if you are interested in a collaboration, please let us know by sending an email info@truth.design.